

RSS Training Tool

The Rickets Severity Score (RSS) Training Tool is intended to familiarize you with the RSS, support you in assessing patients, and help facilitate conversations about X-linked hypophosphatemia (XLH) and the RSS. This tool is responsive and can be viewed on whatever device is convenient for you.

What's covered in the tool?

SECTION 1:

LEARN ABOUT RSS

Learn about RSS and how to use the scoring guide.

SECTION 2:

PRACTICE SCORING

Follow a step-by-step RSS tutorial and then move on to practice scoring individual images.

SECTION 3:

ASSESS PATIENT CASES

Bring all your knowledge together to test your understanding of RSS with patient cases.

SECTION 4:

RSS CALCULATOR

The RSS Training Tool is also equipped with an RSS calculator, for you to use beyond training.

To explore the tool, visit www.rsstrainingtool.com

This tool was independently developed by a third party and posted for educational and training purposes and outlines the method outlined in all references on www.rsstrainingtool.com. Please see the full list of references under the references and glossary section. The company takes no responsibility for the tool or its use.

© 2023 Kyowa Kirin Canada, Inc. All rights reserved.

RSS Scoring Guide

RADIUS



0
Normal growth plate without changes of rickets



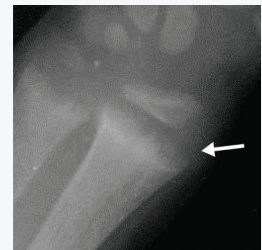
0.5
Lucency of metaphyseal margin without fraying or irregularity



1
Widened growth plate, irregularity of metaphyseal margin, but without concave cupping



1.5
Partial metaphyseal concavity or incomplete fraying of metaphyseal margin



2
Metaphyseal concavity with fraying margin

ULNA



0
Normal growth plate without changes of rickets



0.5
Lucency of metaphyseal margin without fraying or irregularity



1
Widened growth plate, irregularity of metaphyseal margin, but without concave cupping



1.5
Partial metaphyseal concavity or incomplete fraying of metaphyseal margin



2
Metaphyseal concavity with fraying margin

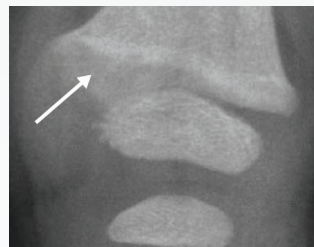
FEMUR



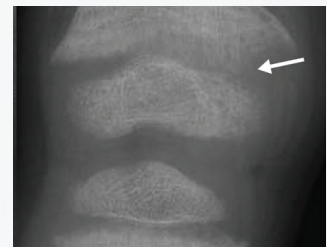
0
Normal growth plate without changes of rickets



1
Partial lucency, smooth margin of metaphysis visible



2
Partial lucency, smooth margin of the metaphysis NOT visible concave cupping



3
Complete lucency, epiphysis appears widely separated from distal metaphysis

TIBIA



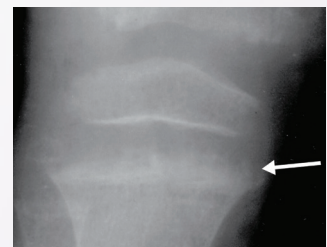
0
Normal growth plate without changes of rickets



1
Partial lucency, smooth margin of metaphysis visible



2
Partial lucency, smooth margin of the metaphysis NOT visible concave cupping



3
Complete lucency, epiphysis appears widely separated from distal metaphysis

To learn more, visit www.rsstrainingtool.com

This tool was independently developed by a third party and posted for educational and training purposes and outlines the method outlined in all references on www.rsstrainingtool.com. Please see the full list of references under the references and glossary section. The company takes no responsibility for the tool or its use.

© 2023 Kyowa Kirin Canada, Inc. All rights reserved.